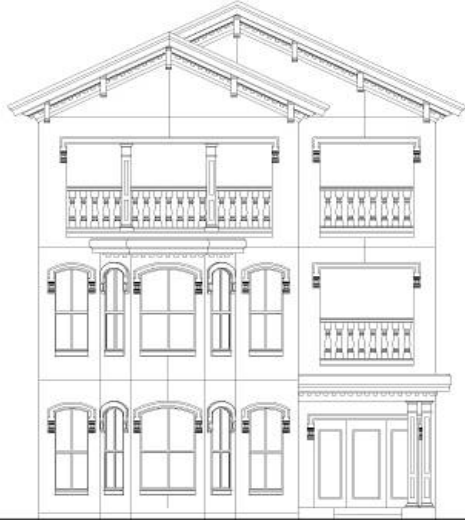


Villa Roma

4030 Square Feet Living Area

3 Bedroom, 3 1/2 Baths Elevator Capable
2 Car Garage with option for 3 Car

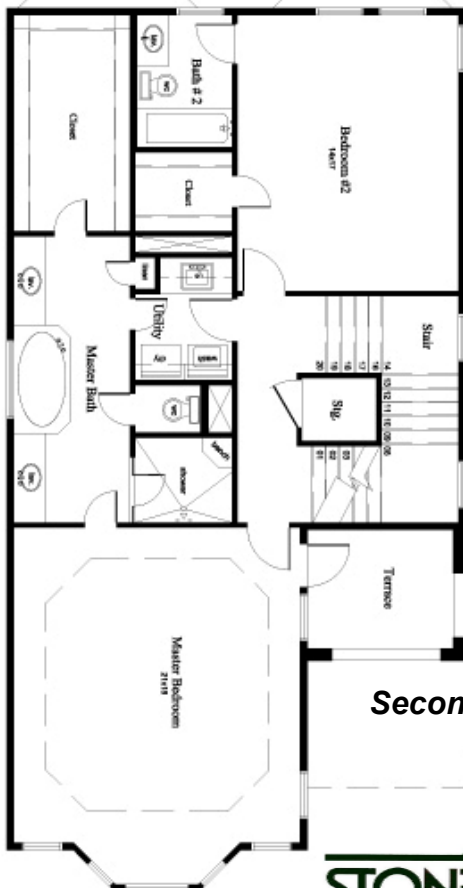
Marketed by:
JBoyd & Associates 281-841-6652
Prudential Gary Greene, Realtors



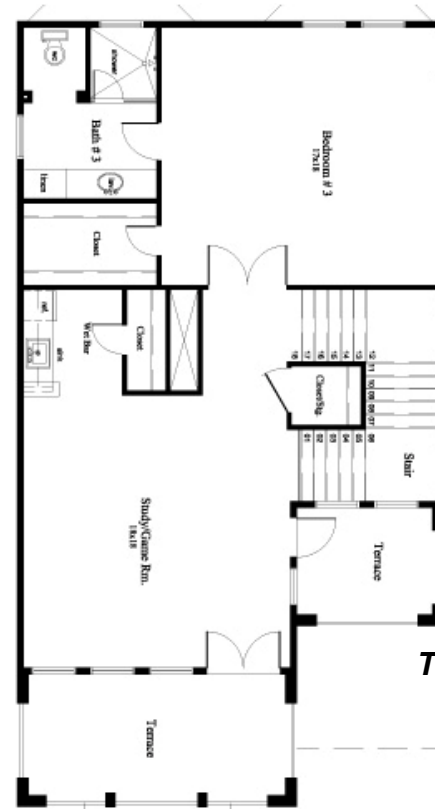
Front Elevation



First Floor



Second Floor



Third Floor



Stonemark Builders reserves the right to change plans, specifications, and prices without notice. Consult your sales executive for current information.

